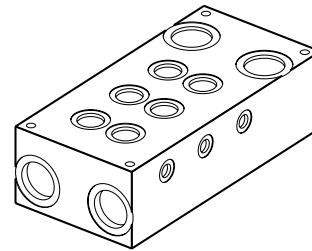
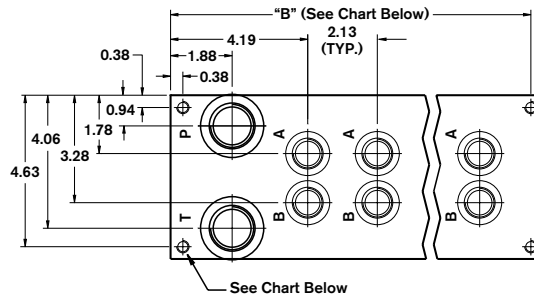
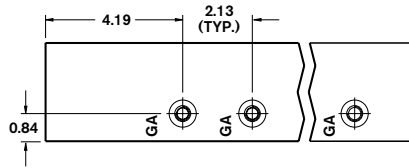
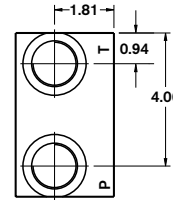
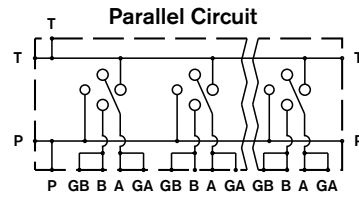
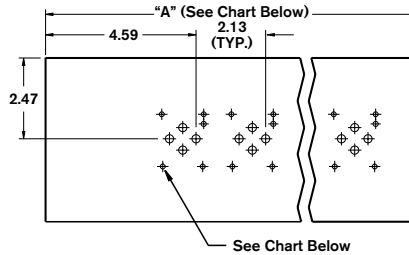
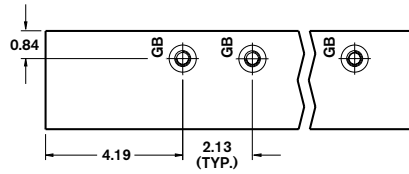
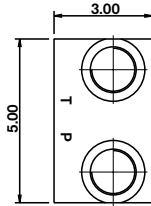
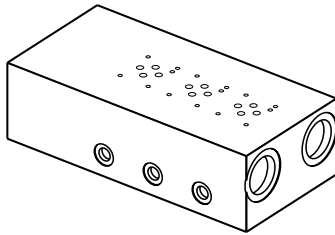


ABM6PNB	XX	/	S	2	-	G	B	
---------	----	---	---	---	---	---	---	--

Revision	= XX							Omit =	UNC Mounting Taps
Number of Station	= 01-08							M =	Metric Mounting Taps BSPP Ports only
Aluminum 6061-T6, 3000 psi			= A					B =	Bottom Ported P and T
Carbon Steel, 5000 psi			= S					G =	Gauge Ports for A and B
Valve Spacing 2.125"				= 2					
SAE Threaded Ports									
BSPP Threaded Ports									



	P & T Ports	A & B Ports	GA & GB Ports	Manifold (Mtg.)	Valve (Mtg.)
...12G	1-5/16-12 SAE-16	7/8-14 SAE-10	7/16-20 SAE-4	3/8-16 x 0.75 DP.	10-24 x 0.50 DP.
...01GM	1" BSPP	1/2" BSPP	1/4" BSPP	M10 x 0.75 DP.	M5 x 0.50 DP.

Number of Stations	01	02	03	04	05	06	07	08
Dim. "A"	6.25	8.25	10.50	12.50	14.75	16.75	19.00	21.00
Dim. "B"	5.865	7.875	10.125	12.125	14.375	16.375	18.625	20.625
Approx. Weight DI (lbs)	25	32	41	49	58	66	74	82

All dimensions in inches