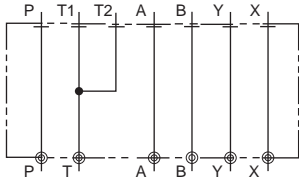


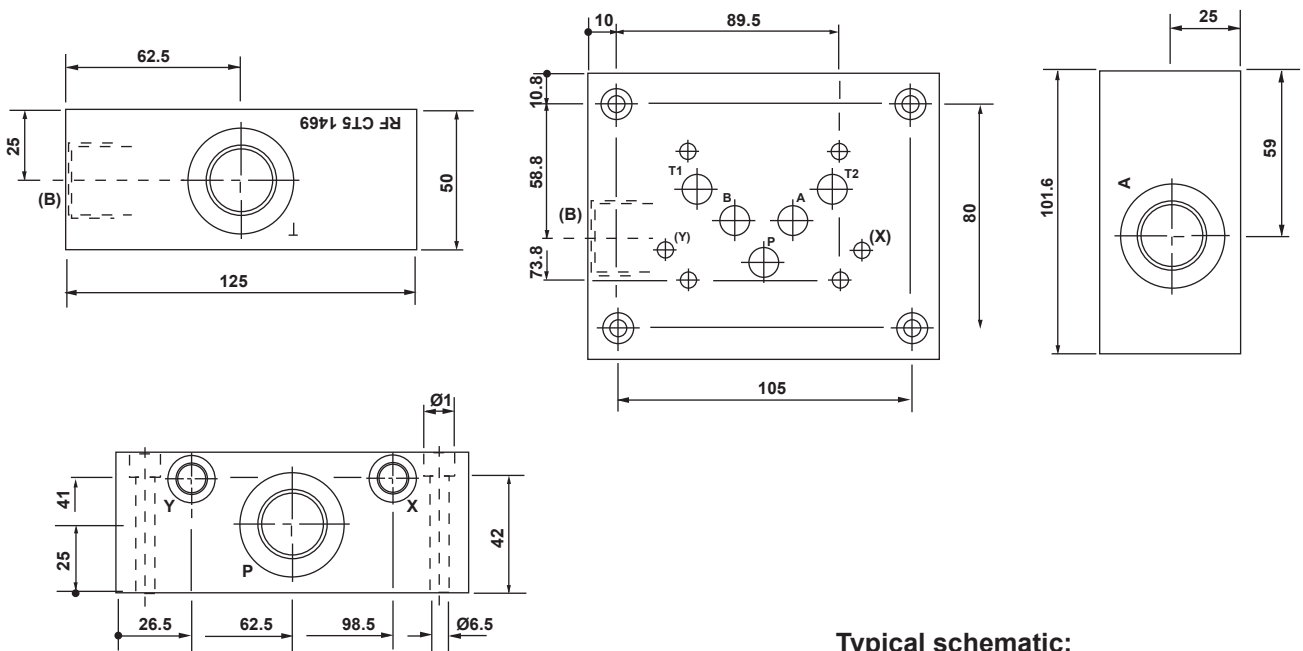
### Features:

- Cetop 5 single-station side entry sideplate.
- Material; steel.
- Working pressure; 315 bar.
- 'P', 'T' ports = 3/4" B.S.P. female.
- 'A', 'B' ports = 3/4" B.S.P. female.
- 'X' and 'Y' ports = 1/8" B.S.P.

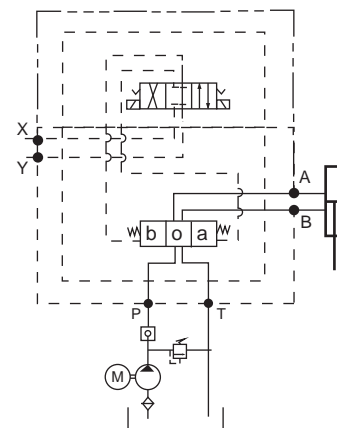


### Dimensions:

Side entry; P & T, A & B, X & Y ports.



### Typical schematic:



### Model code

<b>FTMB10</b>	<b>XY</b>	<b>S</b>
---------------	-----------	----------

Product type

#### Port size:

P, T = 3/4" BSP  
 A, B = 3/4" BSP  
 X, Y = 1/8" BSP

#### Manifold material:

A = Aluminum  
 S = steel