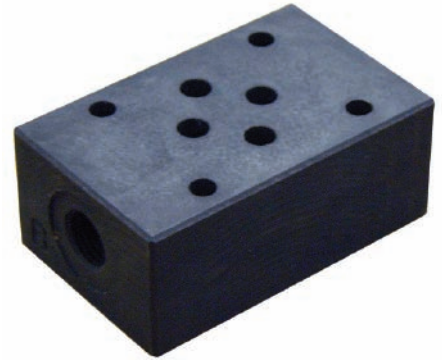
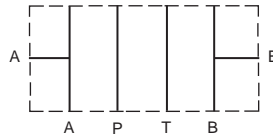


Features:

- Cetop 03 tapping module
- Material = steel
- Weight = 0.6kg

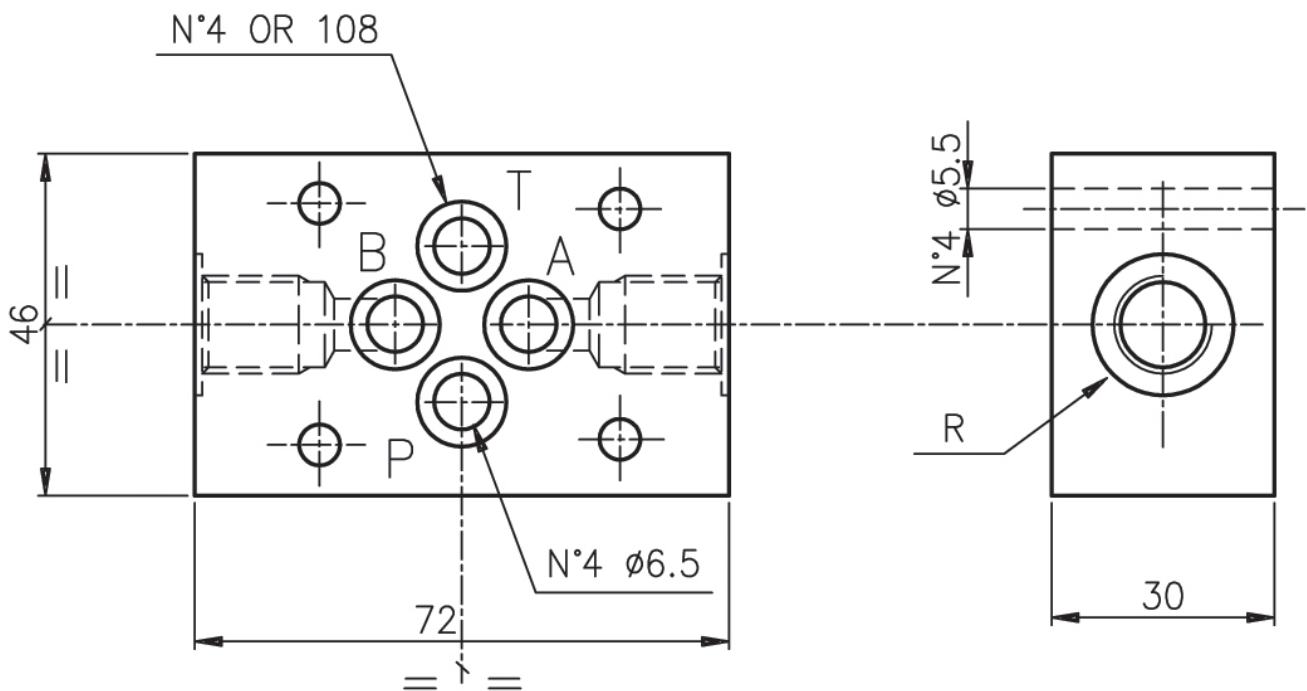


Type	Sorties			
0	A + B			
3	<table border="1" style="display: inline-table; vertical-align: middle;"> <tr> <td style="border: 1px solid black;">Side B</td> <td style="border: 1px solid black;">P + T</td> <td style="border: 1px solid black;">Side A</td> </tr> </table>	Side B	P + T	Side A
Side B	P + T	Side A		



Example: ports on A and B

Dimensions:



Model code

FTMBA(S)6	0	3	14
Product type: FTMBA6 (Aluminium) FTMBS6 (Steel)			14 = R 1/4"G 38 = R 3/8"G
Model type: 0 and 3 (see table above)			Cetop 3